

*Simple, Convenient, Secure Solutions and Apps for Printing Business Documents from Mobile Devices*



## Lexmark Mobile Print Solutions for Enterprise

The rapid growth in mobile computing has ushered in urgent demand and new expectations for printing from mobile devices. Mobile professionals expect printing to be fast, convenient and easy—as easy as printing from their desktop computer or laptop.

At Lexmark, our focus is on business documents, the mobile users who print them, and the decision makers charged with putting mobile strategies into motion.

Today, there are many ways to implement mobile printing but no single solution that fits all. That's why Lexmark provides a number of ways for your business or organization to capitalize on the benefits of mobile productivity without compromising security and incurring uncontrolled costs.

## Mobile Printing on a Local Area Network

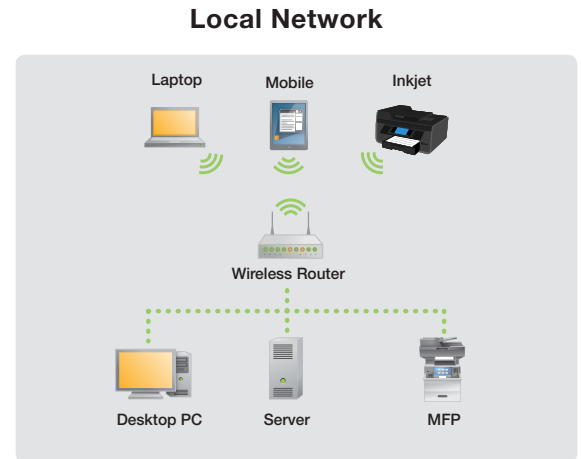
### Lexmark Printers and Apple AirPrint



AirPrint™ on Apple® iOS devices such as iPhone, iPad or iPod touch makes it simple to print email, photos, web pages and documents. The number of Lexmark printers that support AirPrint is growing. Your mobile device can automatically locate and connect to these printers on your local Wi-Fi network, making AirPrint a great solution for a home office or small business.

#### What You Should Know:

- AirPrint provides a simple solution for local network printing at home or within a small-office environment.
- Enterprise users who want to print from a mobile device that is connected to a wide area network will need an alternative solution, such as the Lexmark Mobile Printing App, which allows you to print across network subnets.



## Mobile Printing on an Enterprise-Wide Network

### Lexmark Mobile Printing App provides direct printing throughout the enterprise network

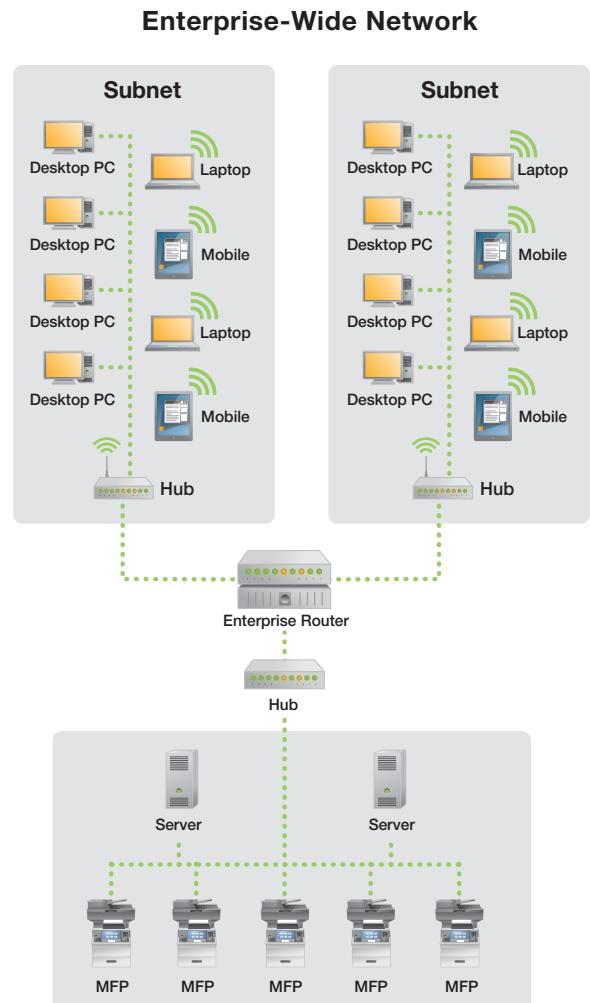


Using the Lexmark Mobile Printing App, enterprise users can print directly to Lexmark printers on the enterprise network from a Wi-Fi connected iPhone®, iPad® or Android™ smartphone or tablet.<sup>1</sup> The Lexmark Mobile

Printing App is a free download that makes it easy to select the printer you want and send PDF documents and image files such as TIFF and JPEG directly to any supported printer on the enterprise network.

#### What You Should Know:

- The Lexmark Mobile Printing App prints across network subnets, providing a direct print solution that meets the needs of large enterprises.
- The app supports printing to Lexmark printers capable of direct PDF and direct image printing.
- File types supported are PDF, TIFF, JPEG, GIF, PNG and BMP. Printing of Microsoft Office documents is not currently supported using this direct printing method



## Mobile Printing from Anywhere to an Enterprise Print Queue

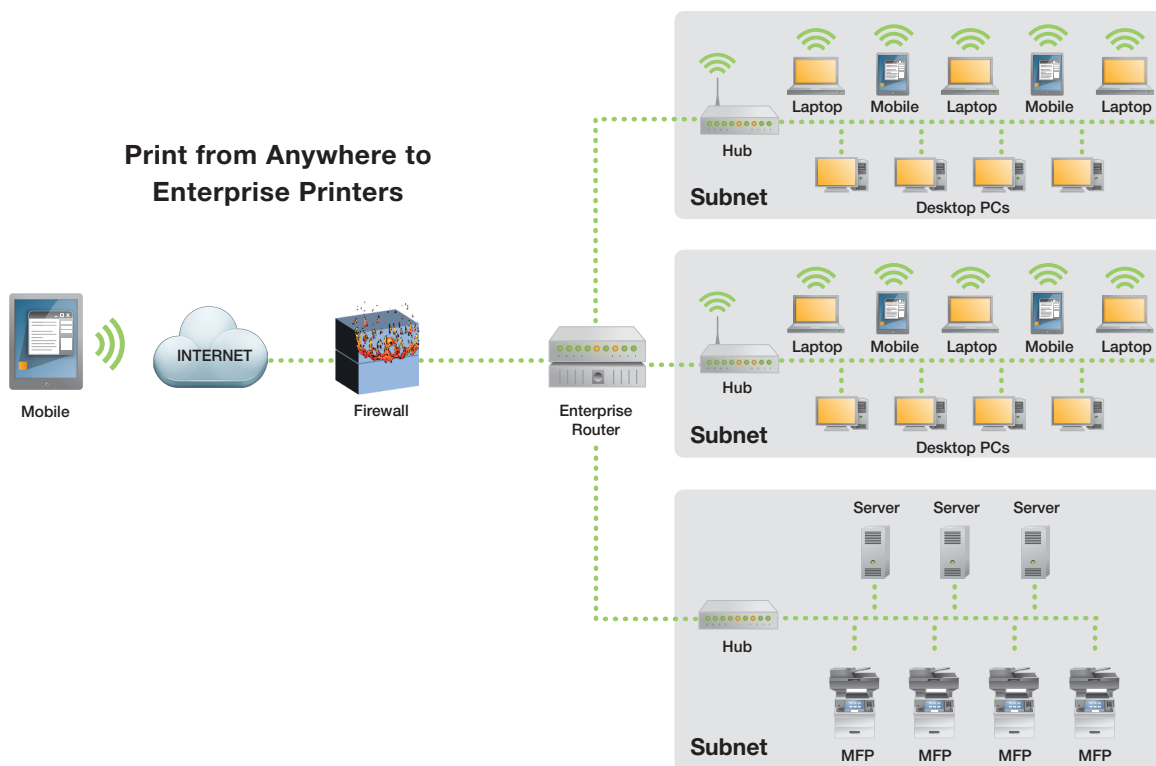
### Lexmark Print Release provides “Print From Anywhere” Convenience, Simplicity and Security



Supporting the needs of a mobile workforce across a large enterprise is made simple and more secure with Lexmark Print Release, a pull-printing solution that combines print-from-anywhere capabilities with secure user-access control. Whether you work from multiple locations onsite—at your desk, in meeting rooms, in the café or break area—or you work from the road, you can easily send print jobs from your mobile device to your corporate “print cloud” and release them on any enabled device<sup>2</sup> in your enterprise network. Print jobs are held securely in the cloud queue until you log in (or swipe your ID card) at the printer and select your documents, releasing them to print.

#### What You Should Know:

- Lexmark Print Release provides truly convenient printing when you are away from your desk. There is no need to choose a printer before sending a print job. All of your print jobs are held in your print queue until you (or an authorized delegate<sup>3</sup>) release them at any Print Release enabled printer on your enterprise network.
- The Lexmark Print Release solution accommodates office documents as well as image files (supported file types include PDF, MS Word, PowerPoint, Excel, TIFF, JPEG, GIF and others).
- Unlike direct print from a mobile device, with Lexmark Print Release all jobs are held in your print queue until you authenticate at a device and choose to release them. In essence, your business or organization benefits from greater security by enabling confidential print for all users.
- Print Release lets you view and release all of your print jobs after you authenticate at the printer by swiping your badge or entering your user log-on. There are no job-specific confirmation codes to remember.
- Print Release provides a single, unified system for managing print from either workstations or mobile devices. Enterprise administrators can track user print activity from every source for improved asset management.
- Lexmark Print Release is built on the Lexmark Solutions Platform, which allows the solution to be deployed in a traditional manner (on-premise) or as software as a service (SaaS). Lexmark deployment experts can help you choose the model that best fits your requirements.



## How Mobile Printing with Lexmark Print Release Works

Sending a print job from your mobile device within a Lexmark Print Release environment is as easy as sending the document from the Lexmark Mobile Printing App or submitting the document as an email attachment.



### Print from Lexmark Mobile Printing App (Android, iOS)

You can print to Lexmark Print Release from the Lexmark Mobile Printing App downloaded to a cellular-connected or Wi-Fi connected iPhone, iPad, Android smartphone or tablet.<sup>4</sup> In addition, you can view print jobs you have sent to the queue and delete unwanted jobs.

1. Using the send or share function, choose Lexmark Mobile Printing and select the number of copies, pages per side, duplex on/off, or color on/off.
2. To release your print jobs, go to any Print Release printer within your corporate network, enter your user log-on or swipe your ID card, then select the documents you want to print.<sup>5</sup>



### Submit as an Email Attachment (Android, iOS and BlackBerry®)

Lexmark Print Release can be configured so you can print from any email enabled mobile device, including Android, iOS and BlackBerry devices.<sup>6</sup> Simply attach the document to an email message sent from your business email account.

1. Send the email to your company's Lexmark Print Release address. The email and any attachments are converted and held in your Print Release queue.
2. To release print jobs, go to any Print Release printer within your corporate network, enter your user log-on or swipe your ID card, then select the documents you want to print.<sup>5</sup>

<sup>1</sup> Sending a print job from the Lexmark Mobile Printing App requires iPhone® 3G or newer, devices running iOS 4.2 or later, or Android® devices running version 2.1 or newer.

<sup>2</sup> Lexmark Embedded Solutions Framework supported print devices or non-Lexmark PCL/PostScript printers equipped with a card reader and connected through a Lexmark Print Release Appliance (Lexmark N7020e).

<sup>3</sup> Available on Print Release for Lexmark Solutions Platform (on-premise) version 1.3

<sup>4</sup> Additional license charge.

<sup>5</sup> Printing speeds, formatting and other characteristics may vary.

<sup>6</sup> Available on Print Release for Lexmark Solutions Platform (on-premise) version 1.3, or Print Release for Lexmark Solutions Platform (SaaS) version 1.0